



152 Beech Hall Road, Highams Park, London, E4 9NT

Offers In Excess Of £600,000

- 3 Bedroom House
- Spacious
- Garage on the side
- Easy transport links
- Highams Park
- Close to popular schools
- Unfurnished
- Bright and airy
- Close to shops
- Good condition throughout

152 Beech Hall Road, London E4 9NT

This stunning 3-bedroom home in the heart of Highams Park offers modern elegance and practical living. Featuring spacious interiors, a beautifully maintained garden, and a fully equipped kitchen, this property is perfect for families or professionals. Just a short walk from local amenities, excellent schools, and Highams Park station for easy access to central London, this home is available now. Contact us today to arrange a viewing!



Council Tax Band: D



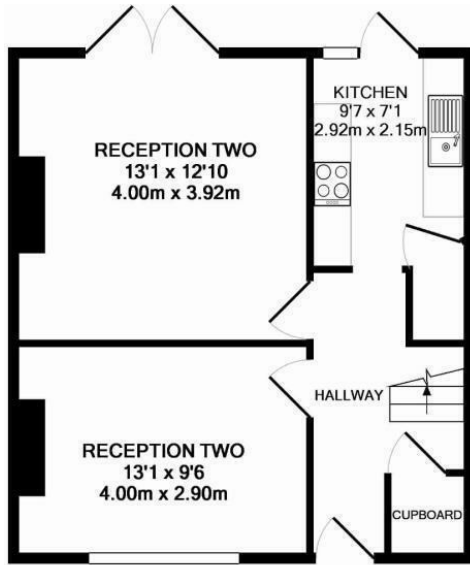
This beautifully presented 3-bedroom house, located in the heart of Highams Park, offers the perfect blend of contemporary elegance and practical living. Ideal for families or professionals, the property boasts spacious, well-designed interiors that provide comfort and style. Each of the three bedrooms is generously sized, filled with natural light, and perfect for relaxation or working from home.

The ground floor features a modern, fully equipped kitchen with high-quality appliances, offering ample space for cooking and dining. The adjoining living area provides a welcoming space for both entertaining and everyday living. Large windows ensure the home feels bright and airy, creating a warm and inviting atmosphere throughout.

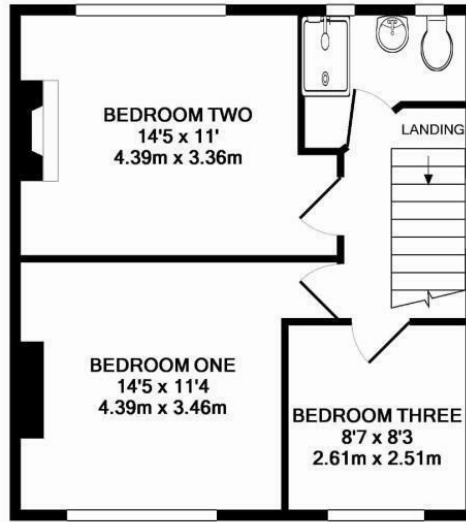
One of the standout features of this home is the well-maintained garden, which offers a serene outdoor space perfect for relaxation, outdoor dining, or gardening enthusiasts. It's an ideal spot to enjoy the outdoors in the comfort of your own home.

Located within walking distance to a range of local amenities, this home is perfectly positioned for convenience. Highams Park's vibrant array of shops, cafes, and restaurants are just a short stroll away, along with excellent schools that make it a great location for families. For commuters, Highams Park station is nearby, providing direct access to central London, making this property an ideal choice for those who work in the city but seek the charm of suburban living.

Available now, this stunning property offers a unique opportunity to live in a highly desirable area. Don't miss the chance to make this beautiful house your new home. Contact us today to arrange a viewing!



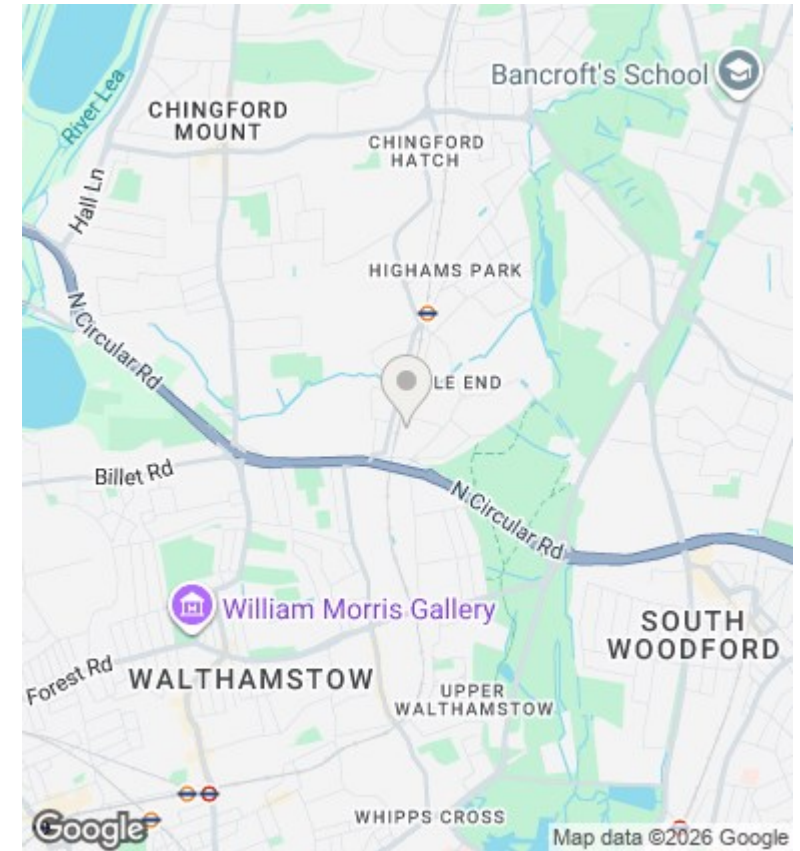
GROUND FLOOR
APPROX. FLOOR
AREA 439 SQ.FT.
(40.8 SQ.M.)



1ST FLOOR
APPROX. FLOOR
AREA 446 SQ.FT.
(41.4 SQ.M.)

BEECH HALL ROAD HIGHAMS PARK
TOTAL APPROX. FLOOR AREA 886 SQ.FT. (82.3 SQ.M.)

Whilst every attempt has been made to ensure the accuracy of the floor plan contained here, measurements of doors, windows, rooms and any other items are approximate and no responsibility is taken for any error, omission, or mis-statement. This plan is for illustrative purposes only and should be used as such by any prospective purchaser. The services, systems and appliances shown have not been tested and no guarantee as to their operability or efficiency can be given
Made with Metropix ©2016



Directions

Viewings

Viewings by arrangement only. Call 02085042440 to make an appointment.

Council Tax Band

D

Energy Efficiency Rating		Current	Potential
<i>Very energy efficient - lower running costs</i>			
(92 plus) A			
(81-91) B			
(69-80) C			79
(55-68) D		63	
(39-54) E			
(21-38) F			
(1-20) G			
<i>Not energy efficient - higher running costs</i>			
England & Wales		EU Directive 2002/91/EC	